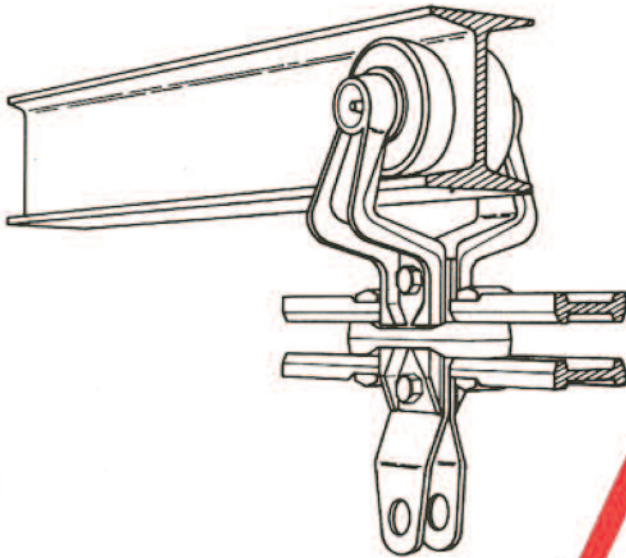


# **PACLINE** CONVEYOR SYSTEMS



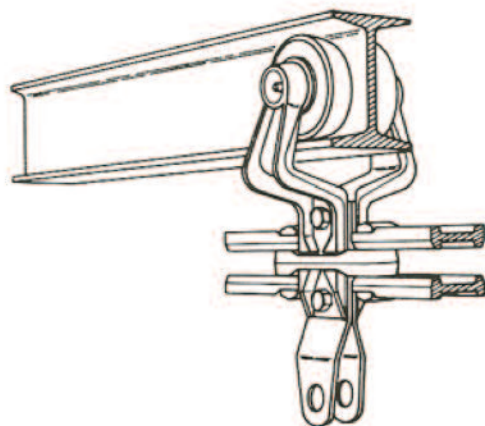
4" pitch rivetless chain and a  
4" I-Beam track to handle  
loads up to 800 lbs.

**Heavy  
Duty**  
**458**

**Production Lines - Distribution Systems - Assembly Lines  
Materials Handling - Overhead Storage - Finishing Systems**

**Medium  
Duty**  
**348**

3" pitch rivetless chain and a  
3" I-Beam track to handle loads  
up to 400 lbs.

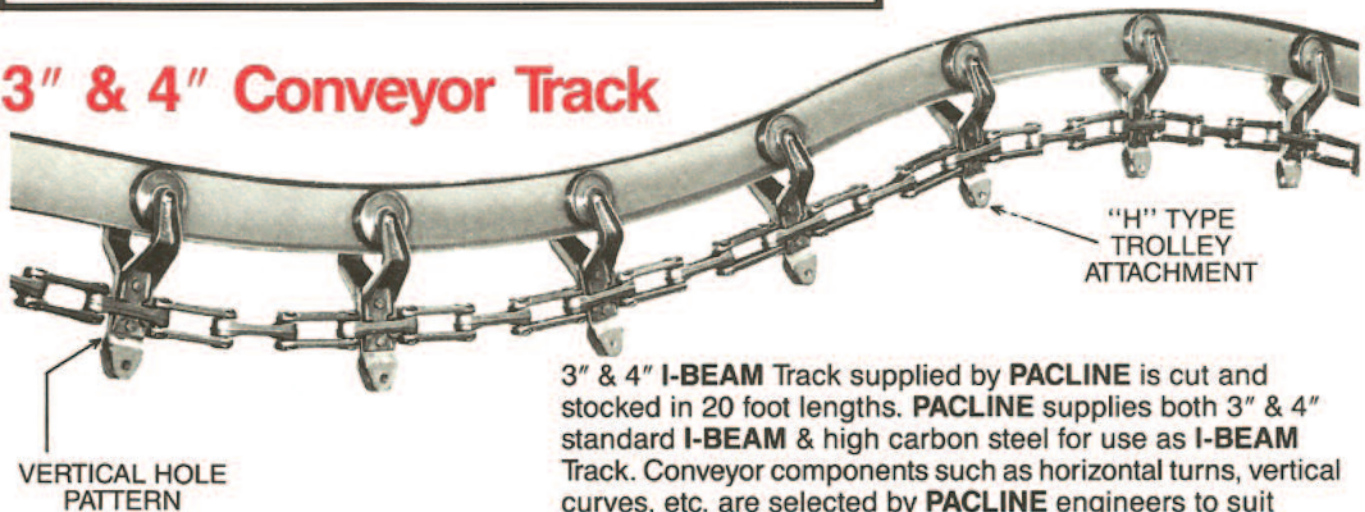


**PAC-BEAM™**  
I-Beam Trolley Conveyor



**PACLINE CORPORATION** has been providing our customers with the design, manufacture and installation of turnkey Overhead Conveyor Systems since 1979. **PACLINE** engineers will design your conveyor layout by following **PACLINE'S** 20 Point Design Procedure. AutoCAD layout drawings will then be supplied, along with a detailed parts list for customer approval.

## 3" & 4" Conveyor Track



3" & 4" **I-BEAM** Track supplied by **PACLINE** is cut and stocked in 20 foot lengths. **PACLINE** supplies both 3" & 4" standard **I-BEAM** & high carbon steel for use as **I-BEAM** Track. Conveyor components such as horizontal turns, vertical curves, etc. are selected by **PACLINE** engineers to suit each customer's specific requirements. Track expansion joints are installed where required.

WT. PER FT.	3" <b>I-BEAM</b>	5.7 lbs.
"	4" <b>I-BEAM</b>	7.7 lbs.

## Rivetless Chain

Drop Forged Rivetless Chain is of simple construction. No tools are required for it's assembly or disassembly. The chain is extremely flexible in both horizontal and vertical planes and requires minimum maintenance. The side bars, centre links and pins are forged from high carbon steel and heat treated. This chain is interchangeable with other makes of the same size and type.

WT. PER FT.	<b>X-348</b>	2.2 lbs.
"	<b>X-458</b>	3.2 lbs.

## Trolley Assemblies and Attachments

A full line of **PACLINE** Trolleys are available with numerous variations of brackets, seals and bearing types. The Trolley brackets are drop forged high carbon steel. Trolley seals used by **PACLINE** provide reliability and trouble free service. Trolley Attachments are selected to suit each application. The most common "H" Attachment is illustrated above.

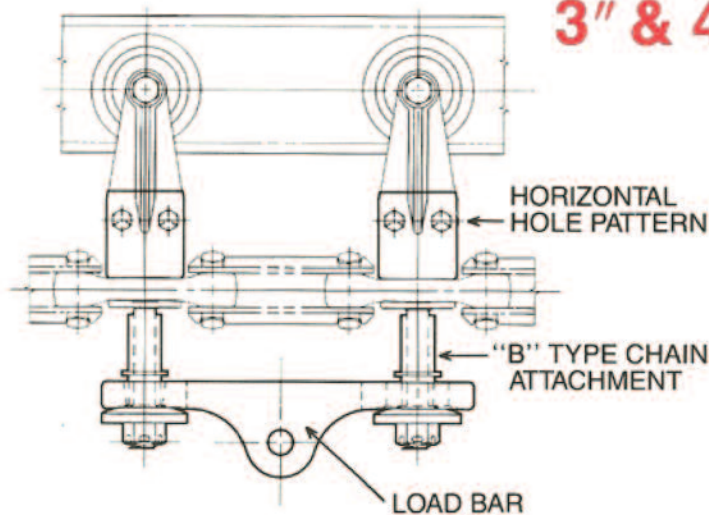
TROLLEY SPACING	<b>X-348</b>	6" Multiples
"	<b>X-458</b>	8" Multiples

## Vertical Curves

Vertical Curves provide the necessary changes in elevation required to maximize plant floor space. The largest radius and minimum angle of incline possible should always be used in order to keep wear and chain pull to a minimum. Safety Devices preventing runaway or backup in the event of chain breakage can be installed on vertical curves.



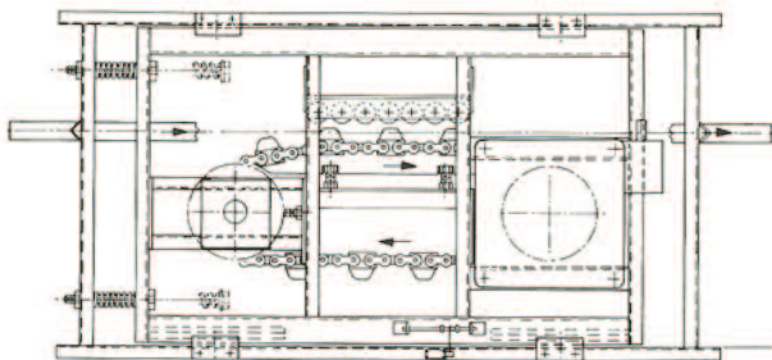
## 3" & 4" Load Bar Attachment



In order to reach the maximum capacity of either the 3" or 4" **I-BEAM** System, load bars may be incorporated into the conveyor chain.

**3" I-BEAM** 200 lb. Trolley Capacity is doubled to 400 lb. capacity with the use of a Load Bar Assembly.

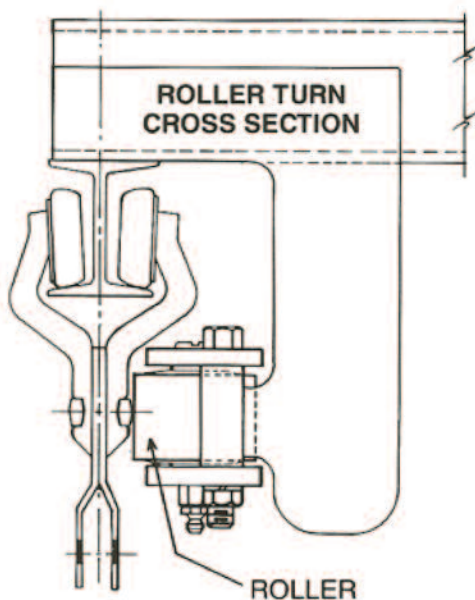
**4" I-BEAM** 400 lb. Trolley Capacity is doubled to 800 lb. capacity with the use of a Load Bar Assembly.



TYPICAL FLOATING CATERPILLAR DRIVE

## Caterpillar Drives

**PACLINE** Caterpillar Drives are the strongest and most commonly used drive and can be installed along any convenient length of straight track. **PACLINE** offers drives for either fixed or variable speed applications. When the capacity of one drive is exceeded, multiple drives are supplied with load sharing. Floating Caterpillar Drives are recommended. As an extra safety feature, all drives are provided with overload protection. Sprocket Drives are also available for smaller systems.



## Horizontal Track Turns

Traction Wheels or Roller Turns are required on all Horizontal Track Turns, to hold the conveyor chain under the vertical centre line of the **I-BEAM**. Standard Horizontal Turns are available in a wide range of radii and degree changes. Special radii and angles are also available. Spoke or Plate type wheels are used where appropriate.

## Rollers, Bolts and Chain Pins

Rollers, Bolts, Chain Pins, etc. can be replaced when worn. Contact **PACLINE** Engineering for details.



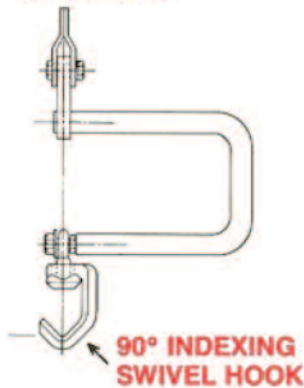


TYPICAL SPRING TYPE TAKE-UP

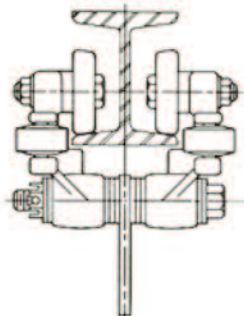
## 3" & 4" Take-Ups 180 Degrees

The Take-Up Unit ensures the smooth operation of the conveyor system, by means of automatically supplying tensioning force to the conveyor chain. Its ideal location is at a low point in the system immediately following the drive unit. The Spring Type Take-Up is the most common, however many styles are available to suit all requirements.

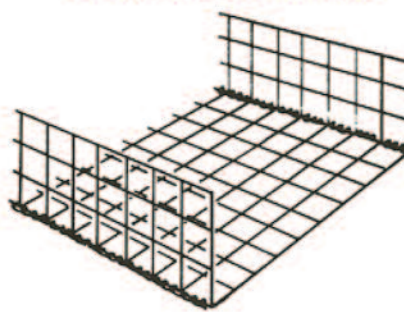
### SANITARY HOOK ASSEMBLY



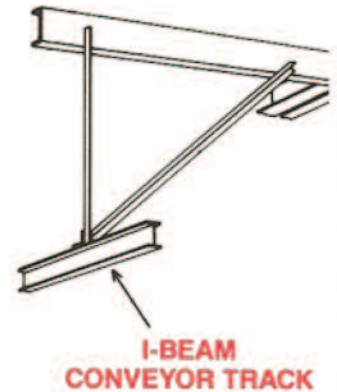
### HAND PUSHED TROLLEY



### WIRE MESH GUARD WITH HELIX WIRE STITCHING



### INSTALLATIONS



**RECONDITIONED EQUIPMENT:** The trend of the 1990's is towards cost saving measures. **PACLINE** is ready to recommend where it is advisable to consider purchasing reconditioned equipment. **PACLINE** can also restore your existing equipment to a "like new" condition.

Information on either 2" or 6" **I-BEAM** Systems is available on request.

**MAINTENANCE & LUBRICATION:** Available by a monthly Service Contract.

## OTHER BROCHURES AVAILABLE

### ENCLOSED TRACK



**PACLINE'S** Enclosed Track Overhead Conveyor System is ideal for all applications. Built in flexibility allows the conveyor system to fit any plant layout. Bolt together construction saves on installation labor and makes future line modifications easy to accommodate. The system can be inverted for conveying load-carrying trays. The Enclosed Track design provides a safe, quiet, and clean running system. Eight page brochure and video available.

### PACLINE Carousels



Horizontal Carousel

### HORIZONTAL CAROUSELS

**PACLINE'S** Heavy Duty Horizontal Carousel provides Greater Live Load Capacity. Bin capacity is 2,000 lbs., 350 lbs. per shelf. 80 bin unit will transport a total weight of 160,000 lbs., at a picking speed of 45 fpm. Available with Micro Process Controller. Six page brochure and video available.

## PACLINE OVERHEAD CONVEYOR CORPORATION

- |   |                   |                   |
|---|-------------------|-------------------|
| <input type="checkbox"/> 5890 SHAWSON DRIVE, MISSISSAUGA, ONTARIO L4W 3W5 | TEL: 905.858.2330 | FAX: 905.858.2333 |
| <input type="checkbox"/> 155 GREAT ARROW, BUFFALO, NEW YORK 14207         | TEL: 716.856.8860 | FAX: 716.876.9287 |